



**NobTra**  
Traffic light manufacturer

# Visible, Durable & High Performance Lane Light



Strong pressure  
resistance



Environmentally  
friendly materials



High and low temper-  
ature resistance



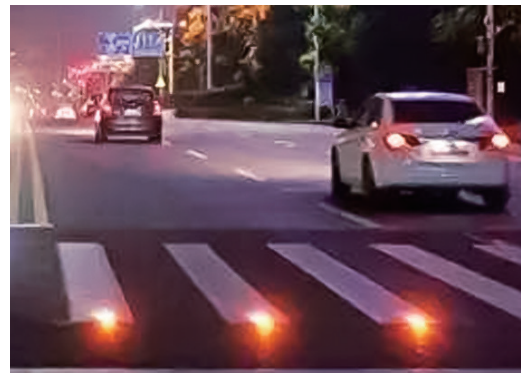
Anti-corrosion

# LED Pedestrian Zebra Line Lane Light

Lane Light are a common means of traffic barriers used to guide people in the right direction to prevent speeding and traffic accidents. Mainly used in high ways, tunnels, railways. Manufactured from a high impact resistant stainless iron, the inner-ribbed contour of the stud is shaped to dissipate tyre impact, increase strength and reduce damage. The high transparent glass reflective lens is coated with a superior protective material, adding more resistance to abrasion and cracking. The result is a road stud that demonstrates high-impact strength and holds up longer on today's heavily trafficked road network.

## Advantage

- The round design have little resistance on impact which makes it robust.
- Material: Stainless iron material has high compression resistance, wear resistance and waterproof.
- Function: In the daytime, you can set the road tubes flashing or continuous light mode, At night, According to the PWM set to save power you can enter the dimming mode. It has a long distance light source and high brightness.
- Two screw holes are designed on both sides to be fitted steadily with screws in road or round post.
- Epoxy glue is filled in the shell. Easy, simple and steady to install like a standard road stud with two screws.



SHENZHEN NOBLE OPTO CO.,LTD.

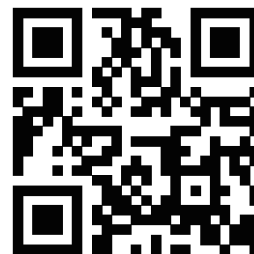
Tel:+86-0755-27651481 27651482

Fax:+86-0755-27651483

Whatsapp/Wechat:008613927455427

E-mail:sales@nobleled.com

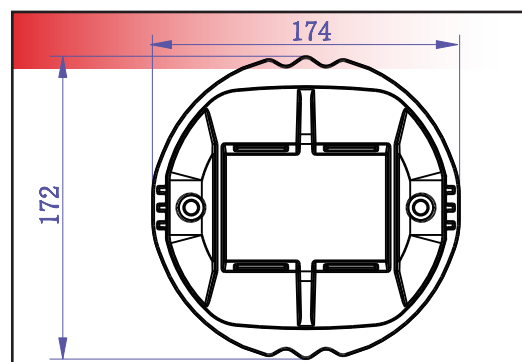
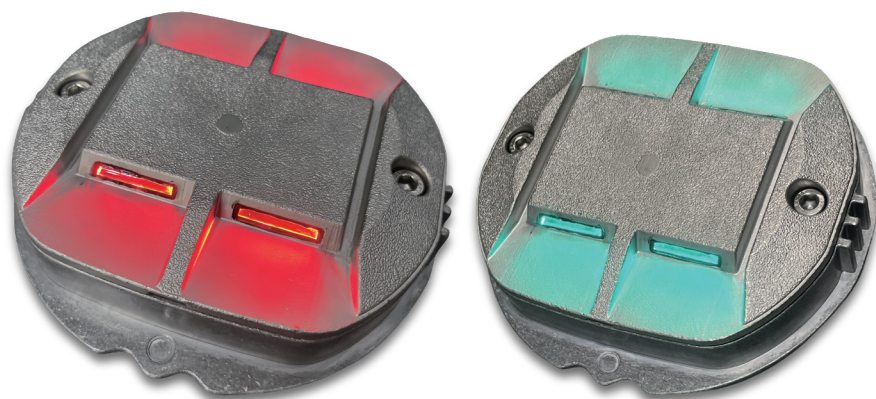
<https://www.nobleled.com>





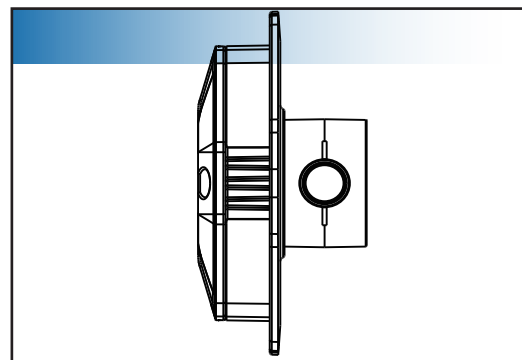
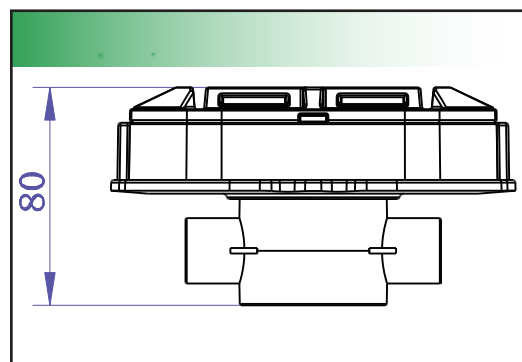
Unlike our competitors, our product utilizes an innovative clip-on modular components system to minimize repair and replacement costs.

## Lane Light Dimensions



### SPECIFICATIONS

product name	cast aluminum Lane Light
product material	Stainless iron and aluminum
product size	174*172*77MM
product weight	2.50KG
working mode	always on or flashing
LED light source	Taiwan crystal lamp beads
working voltage	DC24V
visible distance	500 meters
waterproof rating	IP68
lamp color	red and green
LED model	SMD2835
Quantity of LED	red and green
lamp color	32PCS
Operating temperature	-20°C to +60°C
load capacity	50T
working power	R<7.8W G<9.8W
Brightness	R/23000MCD G/38000MCD
Fixing method	stainless steel screw and nylon tube
Controller	Microprocessor; (sold separately)
Certificate	CE, ISO9001:2015



SHENZHEN NOBLE OPTO CO.,LTD.

Tel:+86-0755-27651481 27651482

Fax:+86-0755-27651483

Whatsapp/Wechat:00861927455427

E-mail:sales@nobleled.com

<https://www.nobleled.com>



Unlike our competitors, our product utilizes an innovative clip-on modular components system to minimize repair and replacement costs.

## Lane Light Controller

### ***SPECIFICATIONS***



Product name	Lane light controller
Product material	Cold rolled steel
Dimming mode	PWM (dimming)
Working power	<2W
Working voltage	24VDC
Waterproof rating	IP54
Number of spikes in a single set	Max 60 pcs
Operating temperature	-20-60℃
Protocol	USART

Note: The experimental data measured when the load is connected to the output end of the relay is a single set of measurements. If multiple sets of measurements are actually connected, attention must be paid to the input power supply adaptation. The above is a test, please do it under the premise of ensuring personal safety. Please check whether the wiring is correct when powering on.

### Application:



SHENZHEN NOBLE OPTO CO.,LTD.

Tel:+86-0755-27651481 27651482

Fax:+86-0755-27651483

Whatsapp/Wechat:00861927455427

E-mail:sales@nobleled.com

<https://www.nobleled.com>

